

HATFIELD CONSULTANTS

MEKONG

Hatfield is a pioneer in the field of environmental services, with a 35-year history of delivering successful projects to clients around the world. Hatfield has extensive experience working with hydropower, mining and other natural resource development companies, government agencies and the international donor community. We have implemented international development projects in over 40 countries, with a major focus on South East Asia and the Mekong Sub-Region.

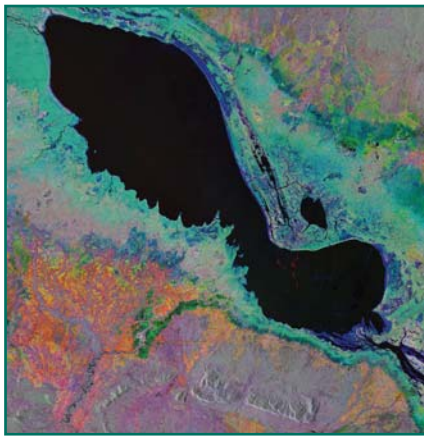
WE PROVIDE A COMPREHENSIVE RANGE OF ENVIRONMENTAL SERVICES TO INTERNATIONAL CLIENTS, INCLUDING:

- Environmental and Social Impact Assessments (ESIA)
- Environmental and Social Monitoring and Management Plans (ESMMP)
- Independent Peer Review of ESIA and ESMMP documents
- Baseline Inventories and Surveys
- Biodiversity Assessments
- Persistent Organic Pollutants (POPs), including Agent Orange Dioxin Investigations
- Integrated Water Resource Management (IWRM)
- Remote Sensing and GIS Applications
- Environmental Information Systems
- Institutional Strengthening
- Environmental Governance
- Capacity Building and Training
- Needs Assessments and Stakeholder Consultations



HATFIELD CONSULTANTS MEKONG

FEATURED PROJECTS



ENVIRONMENTAL AND INSTITUTIONAL SUPPORT TO THE MEKONG RIVER COMMISSION (MRC)

Since 1998, Hatfield has implemented a number of environmental and institutional strengthening programs for the MRC. Hatfield developed and delivered environmental training programs and has developed a number of remote sensing applications to support improved environmental management. Hatfield has also provided senior advice and technical support to the Basin Development Plan process. Hatfield delivers the Lower Mekong Basin Flood Mapping Service, providing regular flood map products to the MRC to improve flood management and monitoring within the basin.



ENVIRONMENTAL ASSESSMENTS AND MONITORING OF NATURAL RESOURCES

Hatfield has conducted environmental assessments and monitoring programs in the hydropower and mining sectors. Hatfield helped build capacity within the Ministry of Natural Resources and Environment (MoNRE) in Lao PRR to conduct independent environmental monitoring within the mining industry. Hatfield conducts Independent Peer Reviews of Environmental and Social Impact Assessments (ESIA) and Environmental Management and Monitoring Plans (EMMP) for hydropower and mining developments in the Mekong Region.



AGENT ORANGE DIOXIN AND PERSISTENT ORGANIC POLLUTANTS (POPs) IN SOUTH EAST ASIA

Hatfield has worked closely with authorities to measure and monitor ultra-trace levels of contamination in Viet Nam, Lao PDR, Thailand, Cambodia, the Philippines, Indonesia and Malaysia. Hatfield's work on investigating dioxin and other contamination in Viet Nam has resulted in implementation of mitigation measures to help prevent the local population from future exposure. In 2010, Hatfield also completed a World Bank regional program designed to enhance the capacity of government agencies in the South East Asian region to manage POPs and POP-like chemicals.

WWW.HATFIELDGROUP.COM



Hatfield Consultants Mekong is part of the Hatfield Group of Companies – providing environmental services around the world for over 35 years.

HATFIELD CONSULTANTS MEKONG

HSE 059, Unit 5, #7 Street, Thadeua Road,
Watsop Village, Sysatanak District, Vientiane, Lao PDR
Phone: +856 20 23229998 E-mail: hcm@hatfieldgroup.com

